



ACCESSORIES

Accessori e ricambi per porte: deviatori, limitatori, frontali, piastre, incontri elettrici, contropiastre, aste e chiavi.

Accessories and spare parts for doors: switches, limiting devices, frontals, plates, door strikes, striking plates, rods and keys.



SSOR e ricambi

accessories and spare parts >>

ACCESSORI E RICAMBI | ACCESSORIES AND SPARE PARTS

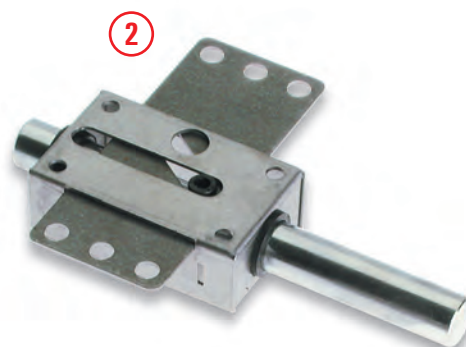
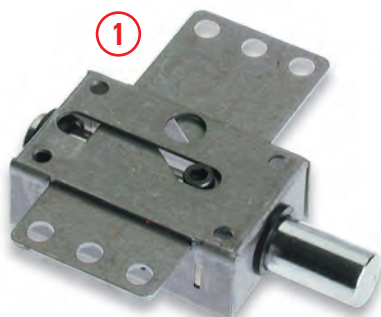
- 1) DVPC: deviatore a piastra corto con catenaccio Ø 18x120 mm.
- 2) DVPM: deviatore a piastra medio con catenaccio Ø 18x160 mm.

Mano destra oppure sinistra (specificare nell'ordine). Catenaccio in acciaio cromato.


- 1) DVPC: short plate switch with bolt Ø 18x120 mm.
- 2) DVPM: medium plate switch with bolt Ø 18x160 mm.

Right or left-hand (specify in the order). Steel chromium-plate bolts.

DVP



I deviatori in fotografia sono sinistri.
The switches in the photo are left-hand.

Codice Code	Misure Measures	Mano Hand	
DVPCDX	80X50X28,5	DX	40
DVPM DX	80X50X28,5	DX	30
DVPC SX	80X50X28,5	SX	40
DVPM SX	80X50X28,5	SX	30

- 1) DVLC: deviatore a leva corto con catenaccio Ø 18x125 mm.
- 2) DVLM: deviatore a leva medio con catenaccio Ø 18x170 mm.

Scorrimento del pistone sulla leva con cuscinetto. Mano destra oppure sinistra (specificare nell'ordine).


- 1) DVLC: short lever switch bolt Ø 18x125 mm.
- 2) DVLM: medium lever switch with bolt Ø 18x170 mm.

Pistons slider on the lever with small cushion. Right or left-hand (specify in the order).

DVL



I deviatori in fotografia sono sinistri.
The switches in the photo are left-hand.

Codice Code	Misure Measures	Mano Hand	
DVLC DX	80X50X28,5	DX	40
DVLM DX	80X50X28,5	DX	30
DVLC SX	80X50X28,5	SX	40
DVLM SX	80X50X28,5	SX	30

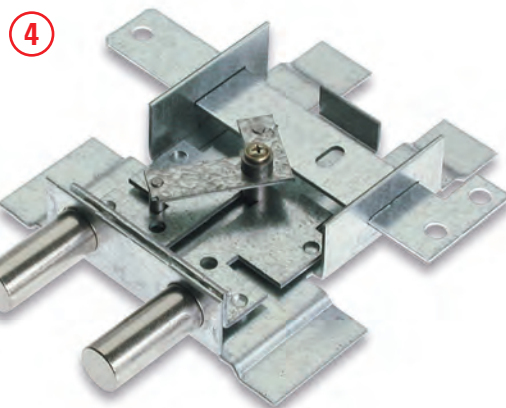
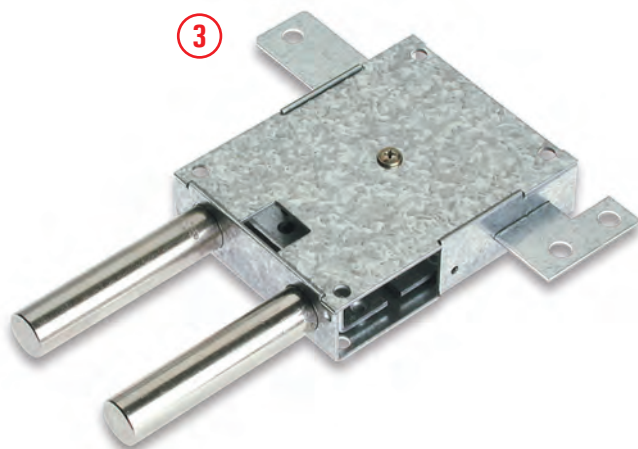
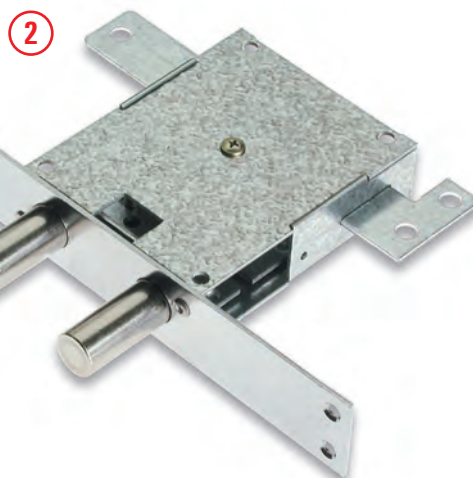
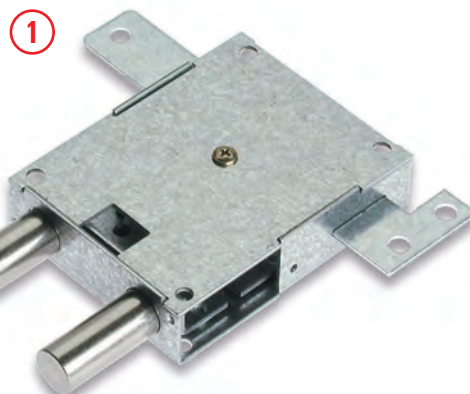
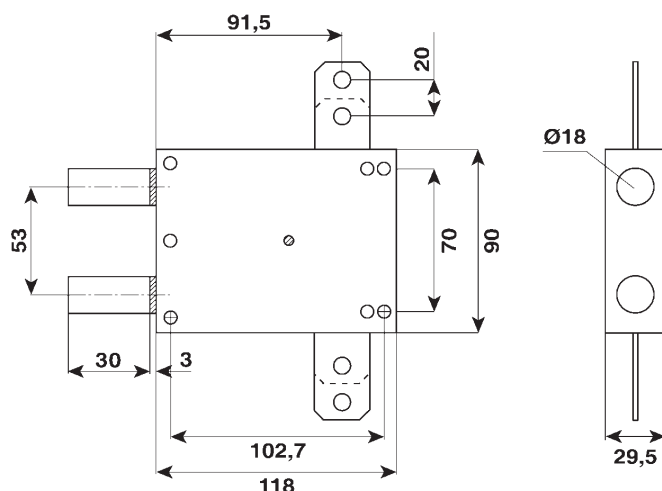
DVG

- 1) DVG: deviatore grande a 2 pistoni corti. Destro oppure sinistro (specificare nell'ordine).
- 2) DVGF: deviatore grande con frontale. Destro oppure sinistro (specificare nell'ordine DVGFDX/DVGFSX).
- 3) DVG40: deviatore grande a 2 pistoni lunghi. Destro oppure sinistro (specificare nell'ordine DVG40DX/DVG40SX).
- 4) DVGTR2: deviatore grande a 2 pistoni corti con alette. Destro oppure sinistro (specificare nell'ordine DVGTR2DX/DVGTR2SX).

Pistoni in acciaio nichelato Ø 18 mm.
Interasse dei catenacci 53 mm.

- 1) DVG: big switch with 2 short bolts. Right or left-hand (specify in the order).
- 2) DVGF: big switch with frontal. Right or left-hand (specify in the order DVGFDX/DVGFSX).
- 3) DVG40: big switch with 2 long bolts. Right or left-hand (specify in the order DVG40DX/DVG40SX).
- 4) DVGTR2: big switch with 2 short bolts and fins. Right or left-hand (specify in the order DVGTR2DX/DVGTR2SX).

Steel-chromium plated pistons Ø 18 mm.
Bolts centre distance 53 mm.



Limitatore di apertura e servizio notte azionato da quadro maniglia 8 mm. Sul primo scatto, limitatore. Sul secondo scatto, servizio notte.

LAPFDX: destro con punta fissa A.
LAPFDX: destro con punta mobile A.
LAPFSX: sinistro con punta fissa A.
LAPFSX: sinistro con punta mobile A.

OPTIONAL

1 contropiastra art. CPLAPMDX/SX
1 quadro ad espansione art. 51155
1 maniglietta art. 5060

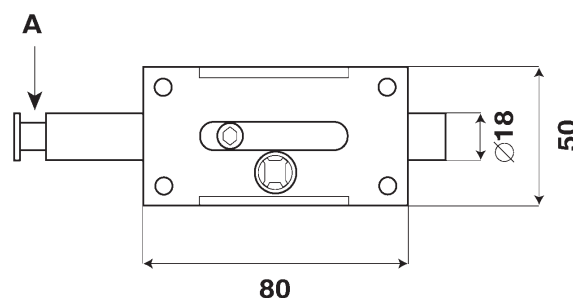
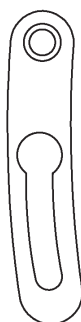
*Opening limiting device and night service driven by handle square 8 mm.
On the first click, opening limiting device.
On the second click, night service.*

*LAPFDX: right with fixed point A.
LAPFDX: right with moving point A.
LAPFSX: left with fixed point A.
LAPFSX: left with moving point A.*

OPTIONAL

*1 striking plates art. CPLAPMDX/SX
1 expansion square art. 51155
1 little handle art. 5060*

LAP



Limitatore di apertura scorrevole e reversibile azionato da perno M6.

OPTIONAL

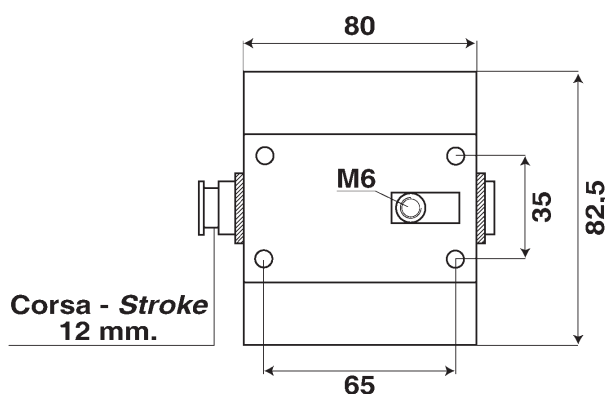
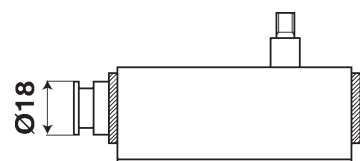
1 contropiastra art. CPLADX/SX
1 bussola art. BUP6LA
1 bussola art. BUP1LA50
1 pomolino art. 5050

Sliding and reversible opening limiting device driven by pin M6.

OPTIONAL

*1 striking plate art. CPLADX/SX
1 hub art. BUP6LA
1 hub art. BUP1LA50
1 little knob art. 5050*

LA

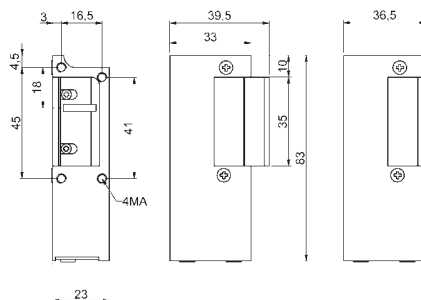


SSOO

Apriporta elettrico per porte blindate. Alimentazione 6-12 V AC. Leva di sbloccaggio per disinnesto temporaneo (fermo a giorno). Congegno automatico antichiusura. Regolabile fino a 4 mm. L'articolo viene fornito completo di 4 viti e del cavo di connessione (lunghezza 1 mt.) pronto per l'uso. Mano destra oppure sinistra specificare nell'ordine. Sporgenza leva a filo oppure 3 mm.

Electric strike for safety doors. Power supply 6-12 V AC. Release lever for temporary disengagement (off during the day). Automatic anti-closure device (antirepeater). Adjustable until 4 mm. The article is available complete of 4 screws and cable of connection (length 1 mt) prompt to use. Right or left-hand. Specify in the order. Lever projection 0 or 3 mm.

Codice Code	Mano Hand	Sporgenza Projection
5500D	DX	0
5500S	SX	0
5500D3	DX	3
5500S3	SX	3



5528
5537

Contropiastra elettrica per porte blindate. Alimentazione 6-12 V AC. Leva di sbloccaggio per disinnesto temporaneo (fermo a giorno). Congegno automatico antichiusura. Regolabile fino a 4 mm.

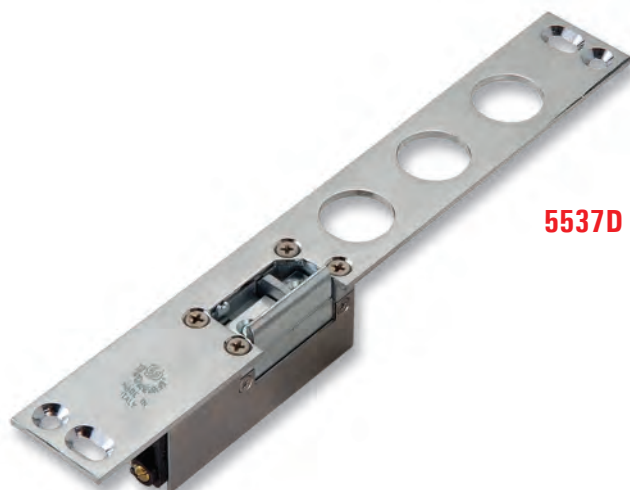
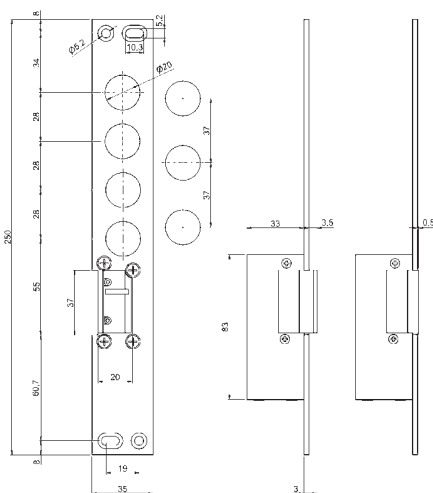
L'articolo viene fornito completo del cavo di connessione (lunghezza 1 mt.) pronto per l'uso. Mano destra oppure sinistra specificare nell'ordine.

Sporgenza leva a filo oppure 3 mm.

Contropiastra in acciaio cromato interasse 28 mm oppure 37 mm.

Electric strike plate for safety doors. Power supply 6-12 V AC. Release lever for temporary disengagement (off during the day). Automatic anti-closure device (antirepeater). Adjustable until 4 mm. The article is available complete of 4 screws and cable of connection (length 1 m) prompt to use. Right or left-hand. Specify in the order. Lever projection 0 or 3 mm. Striking plate in chromium-plated steel interspace 28 mm or 37 mm.

Codice Code	Mano Hand	Sporgenza Projection	Interasse Interspace
5528D	DX	0	28
5528S	SX	0	28
5537D	DX	0	37
5537S	SX	0	37
5528D3	DX	3	28
5528S3	SX	3	28
5537D3	DX	3	37
5537S3	SX	3	37



5500

5528 | 5537

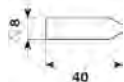
ACCESSORI E RICAMBI | ACCESSORIES AND SPARE PARTS



Puntale filetto M8 per aste. Normale dotazione per art. AA1.

PUAA1

End thread M8 for rods. Standard for art. AA1.

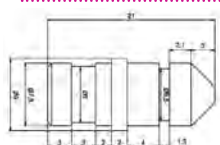


Puntale catenaccio per aste in acciaio temprato. Normale dotazione per art. AA1 - AA2.

PUAA2

End bolt for rods in temperal steel. Standard for art. AA1 - AA2.

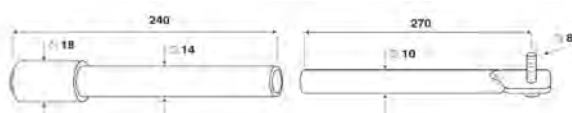
DOTAZIONE | STANDARD ACCESSORIES:
art. 2151, 2152, 2153, 2161, 2163.



Puntale per aggancio con aste 2150 extension.

PU2150AC

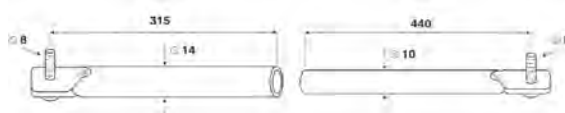
DOTAZIONE | STANDARD ACCESSORIES:
art. 2151, 2152, 2153, 2161, 2163.



Asta terminale corta. Allungabile 320 - 500 mm. Uso: da deviatore a stipite. Lunghezza min/max 320/500.

AC

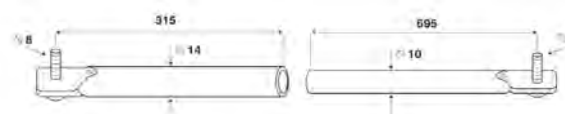
Short terminal rod. Extensible 320 - 500 mm. Use: from switch to jamb. Length min/max 320/500.



Asta al deviatore. Allungabile 470 - 750 mm. Uso: da serratura a deviatore. Lunghezza min/max 470/750.

AD

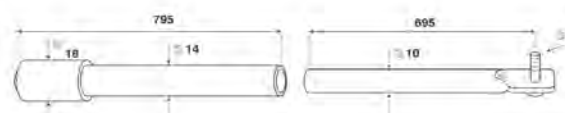
Rod to the switch. Extensible 470 - 750 mm. Use: from lock to switch. Length min/max 470/750



Asta al deviatore lunga. Allungabile 725 - 1000 mm. Uso: da serratura a deviatore. Lunghezza min/max 725/1000.

ADL

Long rod to switch. Extensible 725 - 1000 mm. Use: from lock to switch. Length min/max 725/1000.



Asta terminale lunga. Allungabile 830 - 1485 mm. Uso: da serratura a stipite. Lunghezza min/max 830/1485.

AL

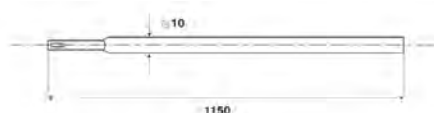
Long terminal rod. Extensible 725 - 1000 mm. Use: from lock to jamb. Length min/max 830/1485.



Asta 1150 mm. con filetto M8. Uso: 2003 - 2008 - 2013 - 2102 - 2103. Lunghezza min/max 1150.

AA1

Rod 1150 mm with thread M8. Use: 2003 - 2008 - 2013 - 2102 - 2103. Length min/max 1150.



Asta 1150 mm. con aggancio. Uso: 2018 - 2022. Lunghezza min/max 1150.

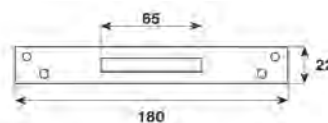
AA2

Rod 1150 mm. with hooking groove. Use: 2018 - 2022. Length min/max 1150.

CP2000 CP2001

CP2000: contropiastra ottonata.
DOTAZIONE: art. 2000
CP2001: contropiastra zincata.
DOTAZIONE: art. 2001, 2003, 2011, 2013.

CP2000: brassed striking plate.
STANDARD ACCESSORIES: art. 2000
CP2001: galvanized striking plate.
STANDARD ACCESSORIES: art. 2001, 2003, 2011, 2013.

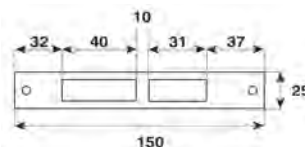


CP2008

Contropiastra zincata.

Galvanized striking plate.

OPTIONAL: art. 2008, 2010.

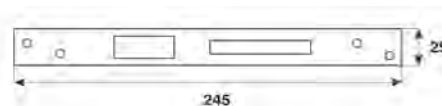


CP2017 CP20172L

CP2017: contropiastra ottonata.
CP20172L: contropiastra cromata.

CP2017: brassed striking plate.
CP20172L: chromed striking plate.

DOTAZIONE: | **STANDARD ACCESSORIES:**
art. 2017, 2018, 2021, 2022.

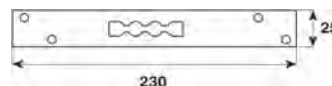


CP2020 CP20202L

CP2020: contropiastra ottonata. 230x25 mm.
CP20202L: contropiastra cromata. 230x25 mm.

CP2020: brassed striking plate. 230x25 mm.
CP20202L: chromed striking plate. 230x25 mm.

DOTAZIONE | **STANDARD ACCESSORIES:**
art. 2020, 2025.

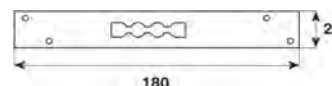


CP2025 CP20252L

CP2025: contropiastra ottonata. 180x22 mm.
CP20252L: contropiastra cromata. 180x22 mm.

CP2025: brassed striking plate. 180x22 mm.
CP20252L: chromed striking plate. 180x22 mm.

DOTAZIONE | **STANDARD ACCESSORIES:**
art. 2025/180.

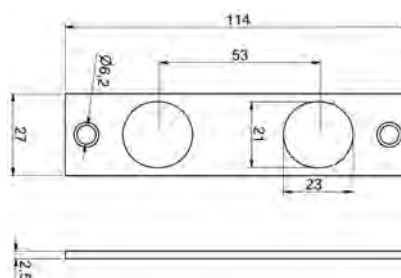


CPDVG

Contropiastra in acciaio cromato.

Striking plate in chromium-plated steel.

OPTIONAL: art. DVG, DVGf.

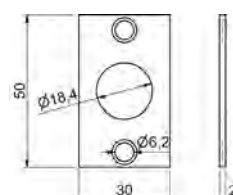


CPAC

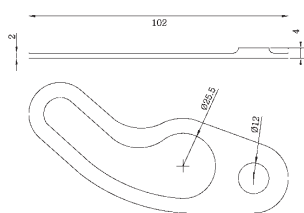
Contropiastra in acciaio zincato.

Striking plate in galvanized steel.

OPTIONAL: art. AC, AL.



ACCESSORI E RICAMBI | ACCESSORIES AND SPARE PARTS

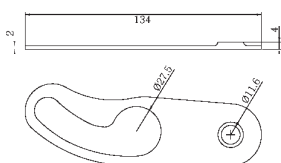


Contropiastra per limitatore. Destra o sinistra.

Opening limiting device striking-plate. Right (D) or left (S) hand.

DOTAZIONE | STANDARD ACCESSORIES:
art. 2540, 2640.

CP2540DLA
CP2540SLA

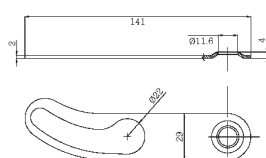


Contropiastra per limitatore. Destra o sinistra.

*Opening limiting device striking-plate.
Right (D) or left (S) hand.*

OPTIONAL: LAPFDX, LAPFSX, LAPMDX, LAPMSX, LA.

CPLASX
CPLADX

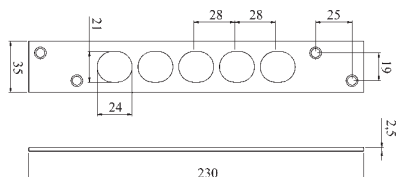


Contropiastra per limitatore. Destra o sinistra.

*Opening limiting device striking-plate.
Right (D) or left (S) hand.*

OPTIONAL: LAPFDX, LAPFSX, LAPMDX, LAPMSX, LA.

CPLAPMDX
CPLAPMSX

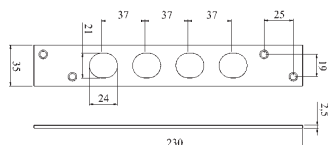


Contropiastra in acciaio cromato per serratura blindata. Interasse 28 mm.

Striking plate in chromium-plated steel for armored lock. Interspace 28 mm.

DOTAZIONE | STANDARD ACCESSORIES:
art. 2500FD28, 2500FS28, 2600FD28, 2600FS28, 25MOF.

CP250028

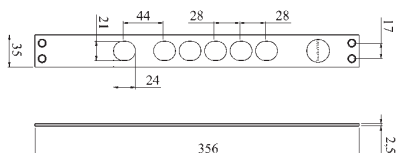


Contropiastra in acciaio cromato per serratura blindata. Interasse 37 mm.

Striking plate in chromium-plated steel for armored lock. Interspace 37 mm.

DOTAZIONE | STANDARD ACCESSORIES:
art. 2500FD37, 2500FS37, 2600FD37, 2600FS37, 25MOF.

CP250037

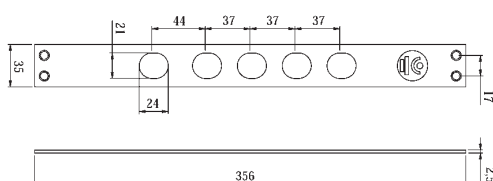


Contropiastra in acciaio cromato per serratura blindata. Interasse 28 mm.

Striking plate in chromium-plated steel for armored lock. Interspace 28 mm.

DOTAZIONE | STANDARD ACCESSORIES:
art. 2530FD28, 2530FS28, 2630FD28, 2630FS28, 25M3F.

CP253028



Contropiastra in acciaio cromato per serratura blindata.. Interasse 37 mm.

Striking plate in chromium-plated steel for armored lock. Interspace 37 mm.

DOTAZIONE | STANDARD ACCESSORIES:
art. 2530FD37, 2530FS37, 2630FD37, 2630FS37, 25M3F.

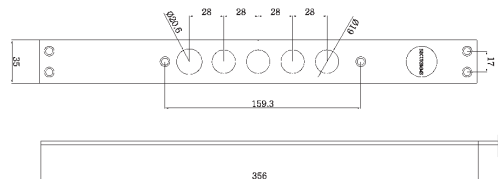
CP253037

FR250028

Frontale in acciaio cromato per serratura blindata.
Interspace 28 mm.

*Frontal in chromium-plated steel for safety door.
Interspace 28 mm.*

DOTAZIONE | STANDARD ACCESSORIES:
art. 2500FD28, 2500FS28, 2600FD28, 2600FS28,
25MOF.

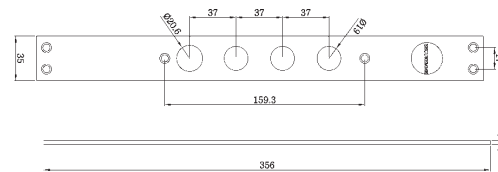


FR250037

Frontale in acciaio cromato per serratura blindata.
Interspace 37 mm.

*Frontal in chromium-plated steel for safety door.
Interspace 37mm.*

DOTAZIONE | STANDARD ACCESSORIES:
art. 2500FD37, 2500FS37, 2600FD37, 2600FS37,
25MOF.

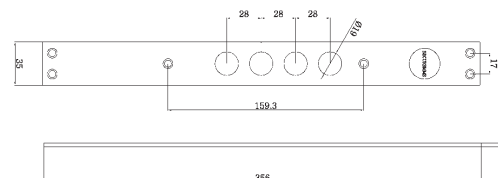


FR251028

Frontale in acciaio cromato per serratura blindata.
Interspace 28 mm.

*Frontal in chromium-plated steel for safety door.
Interspace 28 mm.*

DOTAZIONE | STANDARD ACCESSORIES:
art. 2510FD28, 2510FS28, 2610FD28, 2610FS28,
25M1F.

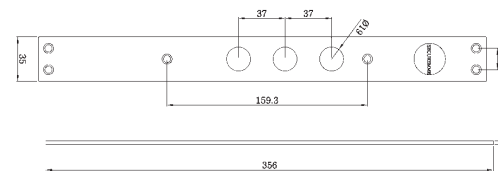


FR251037

Frontale in acciaio cromato per serratura blindata.
Interspace 37 mm.

*Frontal in chromium-plated steel for safety door.
Interspace 37mm.*

DOTAZIONE | STANDARD ACCESSORIES:
art. 2510FD37, 2510FS37, 2610FD37, 2610FS37,
25M1F.

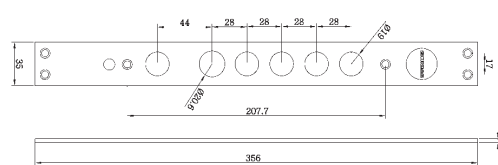


FR253028

Frontale in acciaio cromato per serratura blindata.
Interspace 28 mm.

*Frontal in chromium-plated steel for safety door.
Interspace 28 mm.*

DOTAZIONE | STANDARD ACCESSORIES:
art. 2530FD28, 2530FS28, 2630FD28, 2630FS28,
25M3F.

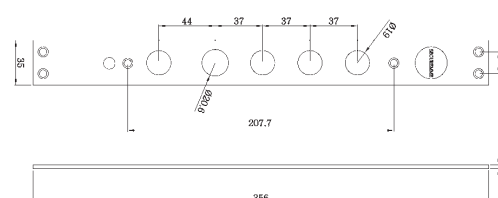


FR253037

Frontale in acciaio cromato per serratura blindata.
Interspace 37 mm.

*Frontal in chromium-plated steel for safety door.
Interspace 37mm.*

DOTAZIONE | STANDARD ACCESSORIES:
art. 2530FD37, 2530FS37, 2630FD37, 2630FS37,
25M3F.

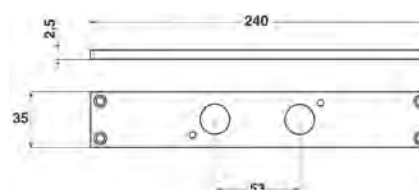


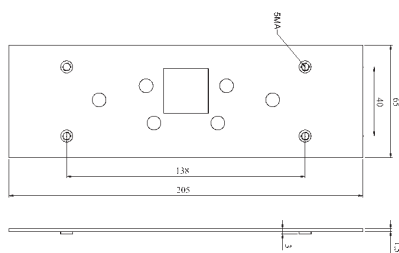
FRDVGF

Frontale in acciaio cromato per deviatori.

Frontal in chromium-plated steel for switch.

DOTAZIONE | STANDARD ACCESSORIES: DVGF



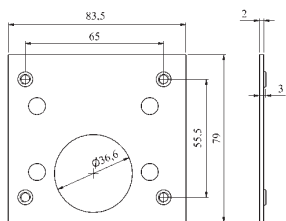


Piastra di fissaggio in acciaio per serrature per serranda.

PA2200FI

Steel fixing plate for rolling shutter lock.

OPTIONAL: art. 2200, 2205, 22101, 22102, 22151, 22152, 2230, 2235, 2260, 2271, 2280.

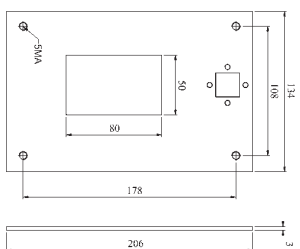


Piastra di fissaggio in acciaio per serrature per cassetta di sicurezza.

PA2311FI

Steel fixing plate for little safe lock.

OPTIONAL: art. 2311, 2313, 2811, 2813.

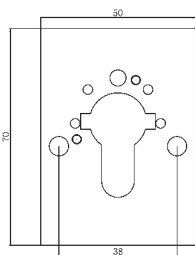


Piastra di fissaggio in acciaio 3 mm. per serratura per porta blindata.

PA2500FI

3 mm steel fixing plate for safety door lock.

OPTIONAL: art. 2500, 2510, 2530, 2540, 25MOP, 25M1P, 25M3P, 25M4P, 2600, 2610, 2630, 2640, 2700, 2730.

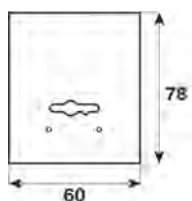


Piastra in acciaio antitrapano 50x70x3 mm. per serratura planare da incassare nella PA2500FI.

PA2526MN

Antidrilling steel plate 50x70x3 mm for planar lock to set in PA2500FI.

OPTIONAL: PA2500FI.

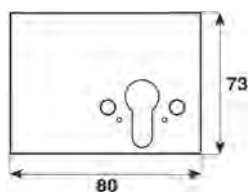


Piastra in acciaio antitrapano 60x78x2 mm. per serratura a doppia mappa.

PA2500MN

Antidrilling steel plate 60x78x2 mm for double ward key lock.

OPTIONAL: serie 25, 25M.

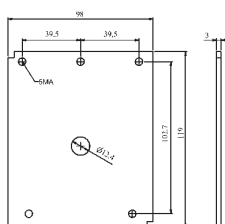


Piastra in acciaio antitrapano 80x73x2 mm. per serratura a cilindro.

PA2600MN

Antidrilling steel plate 80x73x2 mm for cylinder key lock.

OPTIONAL: serie 26, 27.



Piastra di fissaggio in acciaio 3 mm. per deviatore grande.

PADVGFI

3 mm steel fixing plate for big switch.

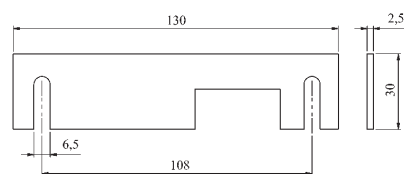
OPTIONAL: DVG, DVG40.

AL2500

Aletta per il fissaggio laterale delle serrature per porte blindate.

Tab for lateral attachment of safety door locks.

OPTIONAL: art. 2500L, 2510L, 2530L, 2540L, 25M0L, 25M1L, 25M3L, 25M4L, 2600L, 2610L, 2630L, 2640L.

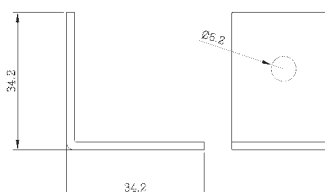


AL2500STR

Aletta per il fissaggio laterale delle serrature per porte blindate.

Tab for lateral attachment of safety door locks.

OPTIONAL: art. 2500L, 2510L, 2530L, 2540L, 25M0L, 25M1L, 25M3L, 25M4L, 2600L, 2610L, 2630L, 2640L.

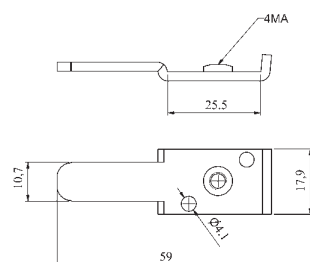


AC2500F

Asta di sbalzo per porte blindate.

Leap rod for safety doors.

OPTIONAL: serie 25, 25M, 26, 27.

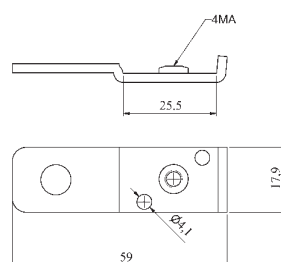


AC2500FT

Asta di sbalzo per porte blindate.

Leap rod for safety doors.

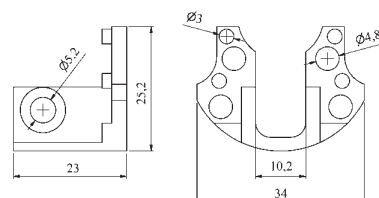
OPTIONAL: serie 25, 25M, 26, 27.



AL2600

Dispositivo per il fissaggio del cilindro.

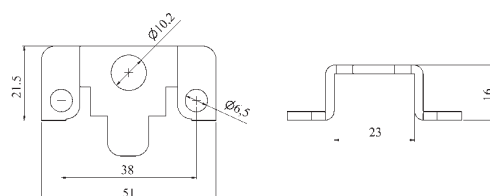
Device plate for cylinder fixing.



AL3000

Piastra anti-sfondamento per cilindro a pomolo.

Anti-breaking plate for cylinder knob.



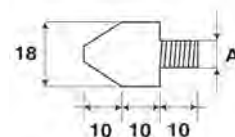
ACCESSORI E RICAMBI | ACCESSORIES AND SPARE PARTS

Antistrappo rostro Ø 18 mm. (A), con gambo filettato M10. Finitura zincata. A richiesta su misura (ordine minimo 1000 pezzi).



Tear-proof, rod Ø 18 mm (A), with threaded M10. Galvanized finishing. On request special dimension (minimum order 1000 pcs.).

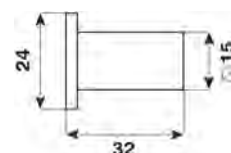
AXPB10



Pozzetto in acciaio ottonato per catenaccio chiusura a terra. Normale dotazione per art. AA1- AA2.

Floor socket in brass steel standard for art. AA1 - AA2.

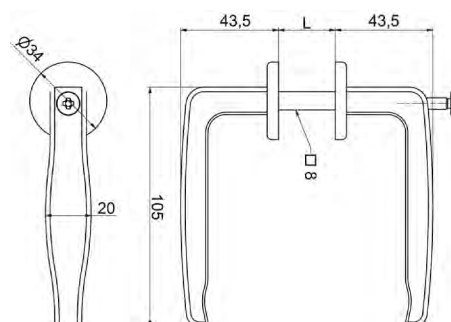
POZZ15



Maniglia per serramenti in nylon nera con viti in testa.

Handle for frames in black nylon with head screw.

MA2000



**Codice
Code**

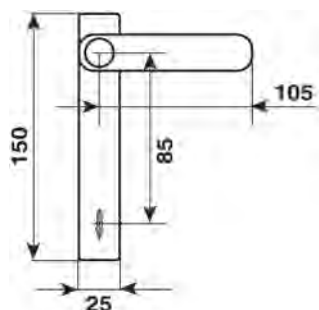
**Lunghezza quadro
Square length**

**MA2000
MA2005**

**40 - 50
50 - 60**

MA2100M

Maniglia completa di bocchetta copritoppa in nylon nero con viti a scomparsa, supporto plastico e quadro maniglia 8 mm. Entrata chiave a doppia mappa. Interasse 85 mm.

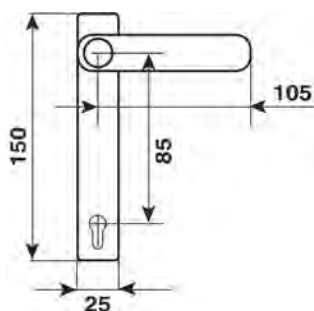


Handle with key-hole escutcheon in black nylon with no visible screws, plastic support and handle square 8 mm. Double ward key entrance. Interspace 85 mm.



MA2100C

Maniglia completa di bocchetta copritoppa in nylon nero con viti a scomparsa, supporto plastico e quadro maniglia 8 mm. Entrata chiave a cilindro. Interasse 85 mm.

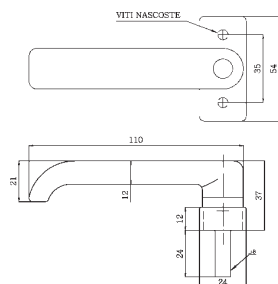


Handle with key-hole escutcheon in black nylon with no visible screws, plastic support and handle square 8 mm. Cylinder key entrance. Interspace 85 mm.



MA2100

Maniglia completa di bocchetta copritoppa in nylon nero con viti a scomparsa, supporto plastico e quadro maniglia 8 mm.

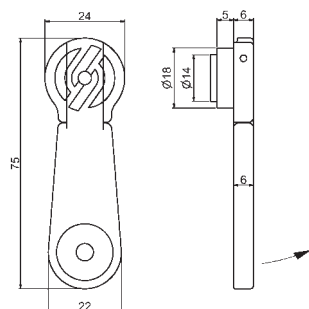


Handle with key-hole escutcheon in black nylon with no visible screws, plastic support and handle square 8 mm.



MA2150 LORETTA

Maniglia basculante ad altezza ridotta con quadro 8 mm. Fissaggio ad espansione.



Balancing handle, reduced height and 8 mm square. Expansion fixing.



CV2000

Chiave a doppia mappa finitura nichelata, confezione 100 pz.

Double ward key nickeled finishing. Packaging 100 pcs.

DOTAZIONE | STANDARD ACCESSORIES:
art. 2000, 2001, 2003, 2008, 2010, 2011, 2013, 2017, 2018, 2020, 2021, 2022, 2025, 2028, 2029, 2101, 2102, 2103, 2200, 2205, 2210, 2215, 2230, 2235, 2240, 2250.

CV2200

Chiave a doppia mappa finitura nichelata, confezione 100 pz.

OPTIONAL

Per serrature con chiave art. CV2000 e CV2300.

Double ward key nickeled finishing. Packaging 100 pcs.

OPTIONAL FOR

Locks with key art. CV2000 and CV2300.

CV2300

Chiave a doppia mappa per cassaforte, 6 leve finitura nichelata, confezione 100 pz.

Double ward key for safe 6 levers, nickeled finishing, packaging 100 pcs.

DOTAZIONE | STANDARD ACCESSORIES:
2300, 2310, 2330, 2340, 2311, 2313, 2380, 2390.

Optional per le serrature con chiave in dotazione CV2000.

Optional for locks with key CV2000.

CN72

Chiave a doppia mappa per cassaforte 6 leve, finitura nichelata, confezione 50 pz.

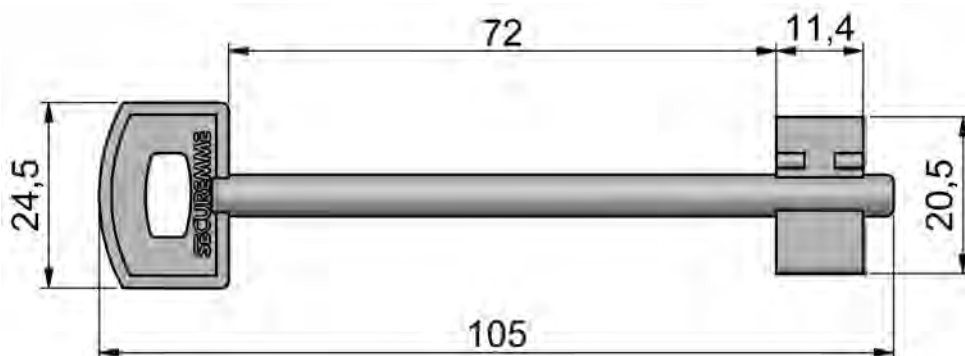
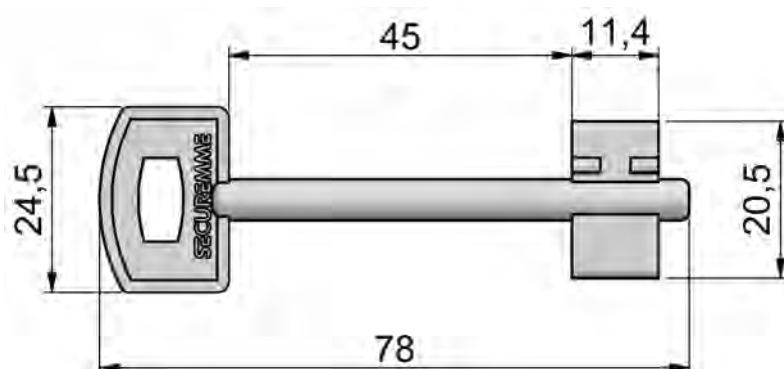
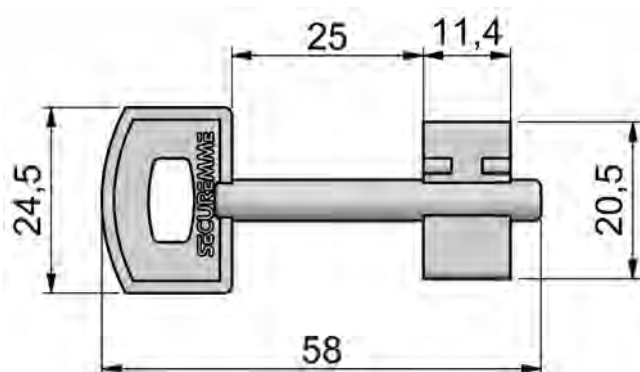
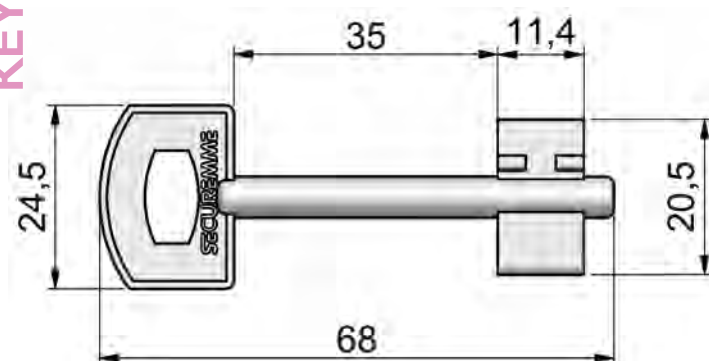
OPTIONAL

Per serrature con chiave art. CV2000 e CV2300.

Double ward key for safe 6 levers, nickeled finishing, packaging 50 pcs.

OPTIONAL FOR

Locks with key art. CV2000 and CV2300.



CVCP

Chiave a doppia mappa piccola con mappa 23 mm. Finitura nichelata, confezione 100 pz.

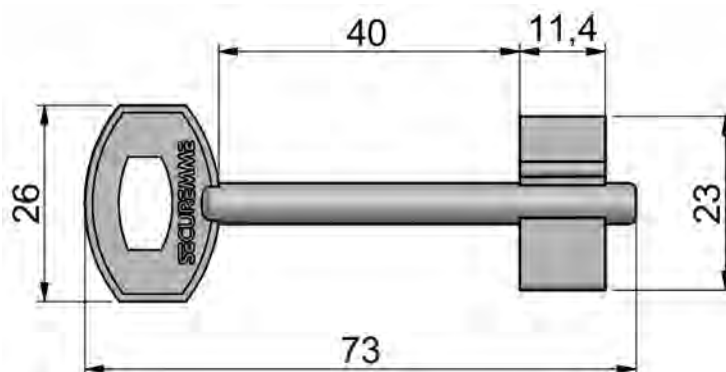
DOTAZIONE

Ricambio.

Small double ward key with map 23 mm. Nickelated finishing, packaging 100 pcs.

STANDARD ACCESSORIES

Spare parts.



CVCM

Chiave a doppia mappa media 23 mm. Finitura nichelata, confezione 50 pz.

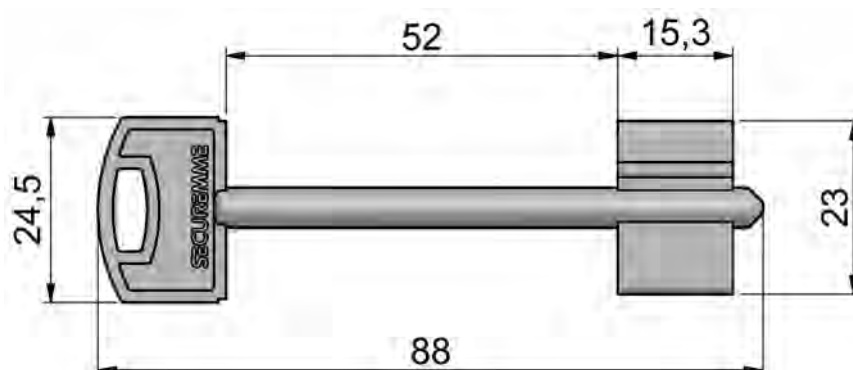
DOTAZIONE

Ricambio.

Medium double ward key with map 23 mm. Nickelated finishing, packaging 50 pcs.

STANDARD ACCESSORIES

Spare parts.



CVCM40

Chiave a doppia mappa. Finitura nichelata, confezione 50 pz.

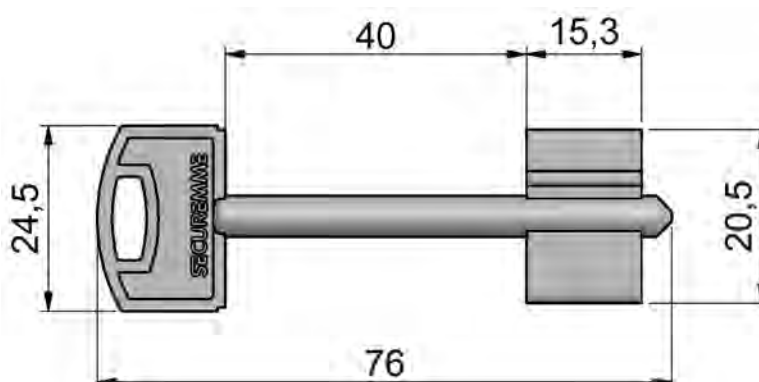
DOTAZIONE

Ricambio.

Double ward key. Nickelated finishing, packaging 50 pcs.

STANDARD ACCESSORIES

Spare part.



CV2404

Chiave a doppia mappa lunga per serrature da applicare. Finitura nichelata, confezione 50 pz.

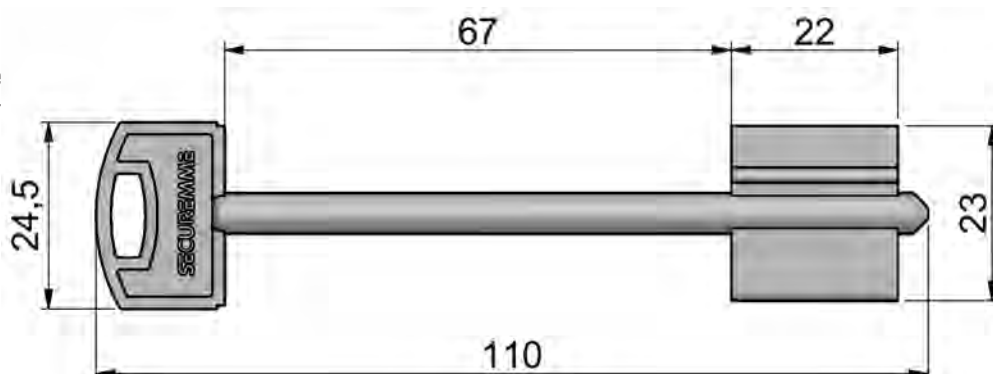
DOTAZIONE

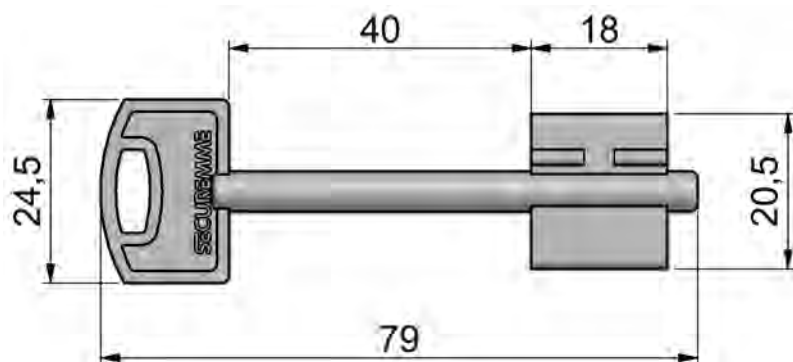
Per serrature art. 2404, 2406.

Long double ward key for locks to apply. Nickelated finishing, packaging 50 pcs.

STANDARD ACCESSORIES

For locks art. 2404, 2406.





CV2800

Chiave a doppia mappa per cassaforte 8 leve. Finitura nichelata, confezione 50 pz.

Double ward key for safe 8 gorges. Nickeled finishing, packaging 50 pcs.

DOTAZIONE | STANDARD ACCESSORIES:
art. 2810, 2820, 2830, 2840, 2850, 2860, 2870, 2880, 2811, 2813.



COCV

Impugnatura coprichiave in ABS, finitura blu.

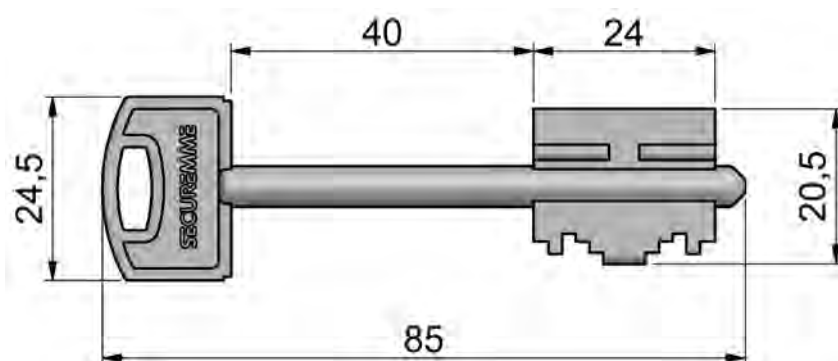
ABS cover-key, blue finishing.

OPTIONAL

Optional per tutte le chiavi.

Optional for all keys.

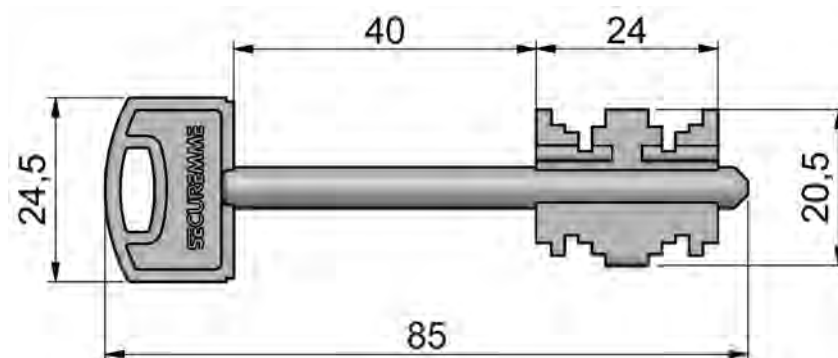
CV2000, CV2200, CV2300, CV2800, CN35, CN72, CM40, CV2500, CV2501, CV2502.



CVSR

Chiave cifrata scrocco per porte blindate. Apre solo scrocco di sicurezza.

Numbered key latch for safety doors. It opens the safety latch only.



CVSR2

Chiave cifrata 2 mandate per porte blindate. Apre solo 2 mandate e lo scrocco di sicurezza.

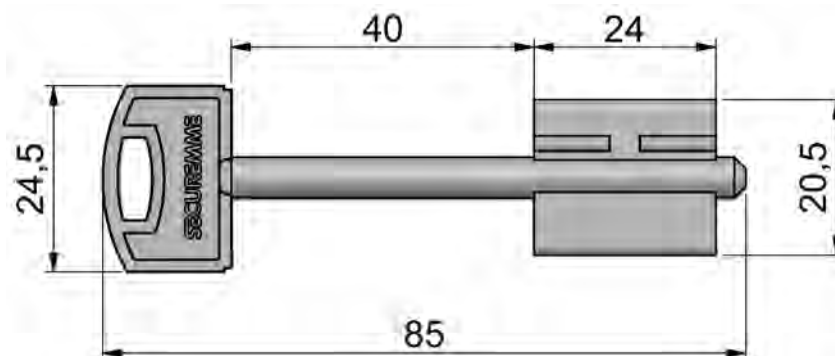
Numbered key 2 turns for safety doors. It opens 2 turns and the safety latch only.

CV2500

Chiave gambo 40 mm. a doppia mappa per porte blindate. Finitura nichelata, confezione 50 pz.

Double ward key stem 40 mm for safety door. Nickeled finishing. Packaging 50 pcs.

DOTAZIONE | STANDARD ACCESSORIES:
art. 2500, 2510, 2530, 2540, 25DHEART, 25SHEART, 25M0, 25M1, 25M3, 25M4.



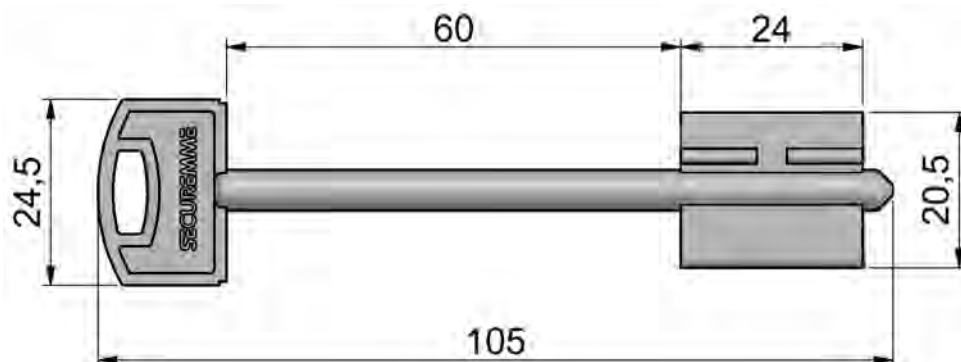
CV2501

Chiave gambo 60 mm. a doppia mappa per porte blindate. Finitura nichelata, confezione 50 pz.

OPTIONAL
Per serrature con chiave art. CV2500.

Double ward key stem 60 mm for safety door. Nickeled finishing, packaging 50 pcs.

OPTIONAL
For locks with key CV2500.



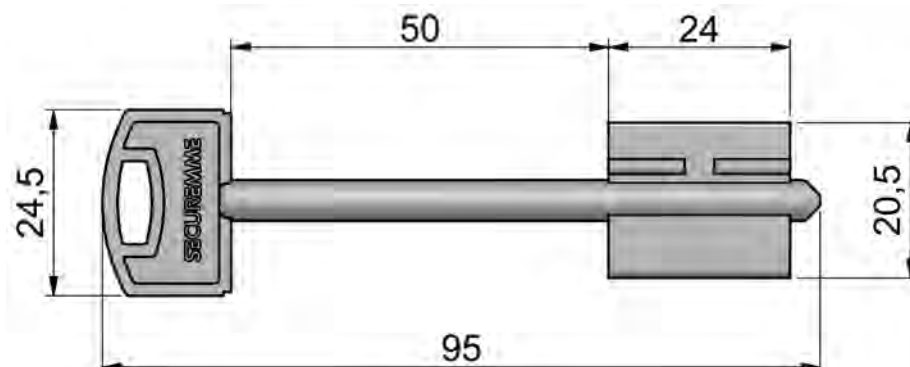
CV2502

Chiave gambo 50 mm. a doppia mappa per porte blindate. Finitura nichelata, confezione 50 pz.

OPTIONAL
Per serrature con chiave art. CV2500.

Double ward key stem 50 mm for safety door. Nickeled finishing, packaging 50 pcs.

OPTIONAL
For locks with key CV2500.





COCVK2

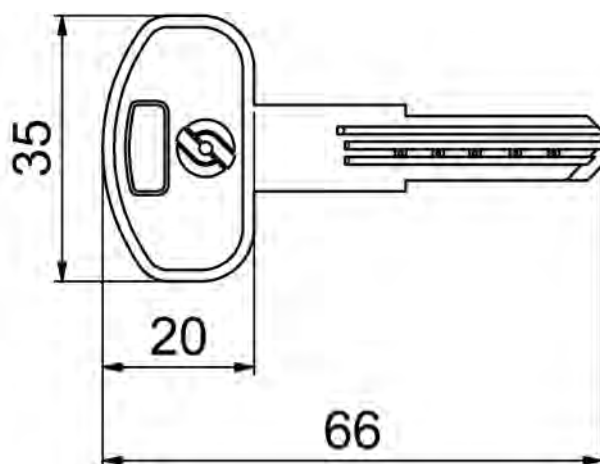
Impugnatura coprichiave in ABS, finitura blu.

ABS cover-key, blue finishing.

OPTIONAL

Per cilindri serie K1.

For cylinder line K1.



K100

K100C - Chiave cifrata a campione per cilindro K1.

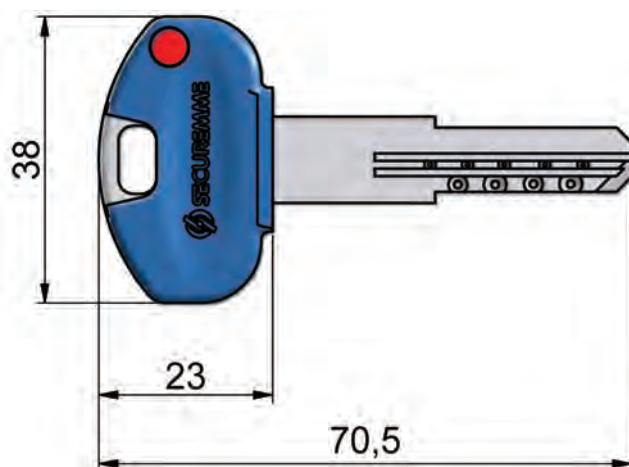
K100S - Chiave supplementare in aggiunta per cilindro K1. Da ordinare insieme al cilindro.

K100G - Chiave grezza per cilindro K1. Confezione 50 pz.

K100C - Key codified as sample for cylinder K1

K100S - Additional key to standard supply for cylinder K1. To order together with cylinder.

K100G - Blank key for cylinder k1. Packaging 50 pcs.



K200

K200C - Chiave cifrata a campione per cilindro K2.

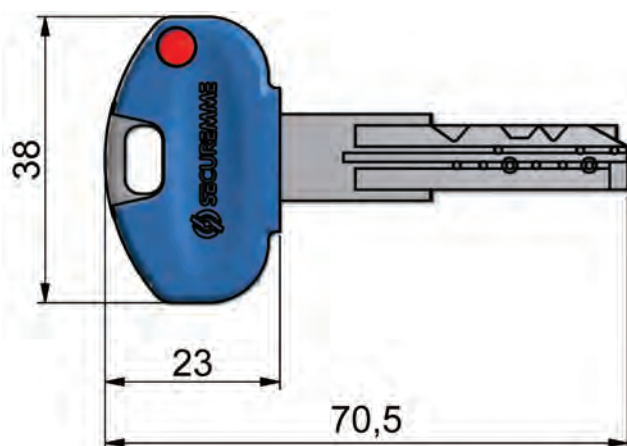
K200S - Chiave supplementare in aggiunta per cilindro K2. Da ordinare insieme al cilindro.

K200G - Chiave grezza per cilindro K2. Confezione 50 pz.

K200C - Key codified as sample for cylinder K2.

K200S - Additional key to standard supply for cylinder K2. To order together with cylinder.

K200G - Blank key for cylinder k2. Packaging 50 pcs.



K300

K300C - Chiave cifrata a campione per cilindro K3.

K300S - Chiave supplementare in aggiunta per cilindro K3. Da ordinare insieme al cilindro.

K300G - Chiave grezza per cilindro K3. Confezione 50 pz.

K300C - Key codified as sample for cylinder K3.

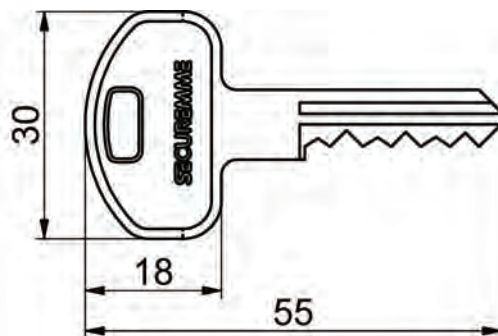
K300S - Additional key to standard supply for cylinder K3. To order together with cylinder.

K300G - Blank key for cylinder k3. Packaging 50 pcs.

KY00

KY00C - Chiave cifrata a campione per cilindro KY.
KY00S - Chiave supplementare in aggiunta per cilindro KY. Da ordinare insieme al cilindro.
KY00G - Chiave grezza per cilindro KY. Confezione 50 pz.

KY00C - Key codified as sample for cylinder KY.
KY00S - Additional key to standard supply for cylinder KY. To order together with cylinder.
KY00G - Blank key for cylinder KY. Packaging 50 pcs.

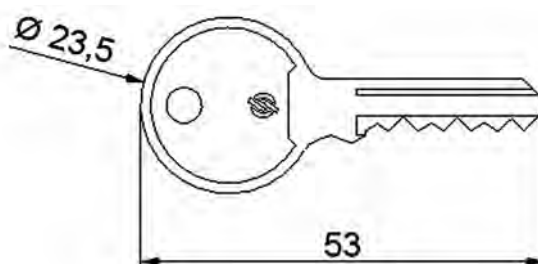


CV2260

Chiave per serrande a cilindro. Finitura nichelata, confezione 50 pz.

Rolling shutter cylinder key. Nickered finishing, packaging 50 pcs.

RICAMBI | SPARE PARTS:
 art. 2260, 2280, 2271, 2272, 2290, 2291.



CV2700C

Chiave elettronica, "transponder" in formato carta di credito per serrature elettromeccaniche.

Electronic key in credit card transponder for electro-mechanical locks.

RICAMBI | SPARE PARTS:
 Per serrature serie 2700. | For locks line 2700.



CV2700T

Chiave elettronica, "transponder" in formato portachiavi per serrature elettromeccaniche.

Electronic key in key ring transponder for electro-mechanical locks.

RICAMBI | SPARE PARTS:
 Per serrature serie 2700. | For locks line 2700.

